

NASHIA

4330 East West Highway
Suite 301
Bethesda, MD 20814



National Association of State
Head Injury Administrators

National Association of State Head Injury Administrators

PRODUCT CATALOG



- Published Booklets
- Fact Sheets
- Web Casts/Radiocasts on CD-ROM
- Novelty Items **(NEW)**
- Photocopies
- Reprints

November 2007

Table of Contents

About NASHIA	3
Published Booklets	4-5
Fact Sheets	5
Web Casts/Radiocasts CD-ROMs	6-7
Novelty Items	7
Photocopies	8
Reprint	8
Special Bundle	9
Complete Product List	10
Order Form	11

Order Form

(Order online at <http://www.nashia.org> or by faxing this form to us at 301-656-3530.)

Title (and shirt size if applicable)	Qty	Price	Subtotal
Order total:			
Shipping: (only first-class shipping is free)			
Total:			
Name:			
Organization:			
Address:			
Phone:			
E-mail:			
Method of Payment:			
<input type="checkbox"/> I will pay by check.			
<input type="checkbox"/> A Government purchase order is being mailed to NASHIA. Check to follow.			
<input type="checkbox"/> A Government purchase order is being mailed to NASHIA. Send an invoice.			
<input type="checkbox"/> I will pay by credit card.		Credit Card Type:	
Credit Card #			Exp. Date
Signature			

NASHIA

4330 East West Highway, Suite 301
Bethesda, MD 20814

(301) 656-3500 / Fax: (301) 656 3530/ <http://www.nashia.org/> nashia@nashia.org

Product List

Title	Price
PUBLISHED BOOKLETS	
Guide to State Government BI: Polices, Funding and Services	\$150.00
Neurobehavioral Issues of TBI: An Introduction	\$20.00
National Directory of State Gov't Brain Injury Contacts (NEW)	\$50.00
Summary of 2005-2006 State Legislation (NEW)	\$25.00
TBI in Children and Teens: A National Guide for Families	\$12.00
FACT SHEETS (sets of 100)	
TBI Facts: Children and Youth	\$25.00
TBI Facts: Neurobehavioral Health	\$25.00
TBI Facts: TBI and Older Adults	\$25.00
CD-ROMs	
3-part Neurobehavioral Radiocast Series	\$75.00
Building Statewide Capacity to Serve Students Web Cast	\$35.00
TBI and Domestic Violence Web Cast	\$25.00
TBI and Housing Web Cast	\$25.00
TBI and Substance Abuse Web Cast	\$25.00
TBI Trust Funds Web Cast	\$25.00
Using a Team Approach to Employment of People Web Cast	\$25.00
NOVELTY ITEMS	
NASHIA T-shirt (white) M, L, XL, XXL, XXXL (NEW)	\$20.00
NASHIA Tote Bag (cream) (NEW)	\$10.00
PHOTOCOPIES	
Building Capacity of Educators to Serve Students with TBI: A Regional Team Approach	\$5.00
Native Americans with TBI and the First National Native American Summit on TBI	\$10.00
SPECIAL BUNDLE	
Special Bundle: Neurobehavioral Issues and TBI	\$100.00
REPRINTS	
Conducting Statewide Needs Assessments for Persons with TBI	\$5.00

About NASHIA

Traumatic brain injury (TBI) is a significant public health problem with more than 1.4 million injuries occurring each year and at least 5.3 million Americans currently living with a long-term or lifelong need for help to perform activities of daily living as a result of a TBI.

TBI is a complex disability that challenges States' ability to respond to the needs of persons with TBI and their families. These individuals need services that cross multiple programs including Medicaid, vocational rehabilitation, employment, education, mental health, substance abuse, and long-term care programs. Without coordinated systems of care, individuals are often placed inappropriately into nursing homes or left to the families to care for without much support or assistance. When families are no longer able to care for these individuals, the families turn to the State, which is generally the only resource for these crisis situations.

In 1990 NASHIA became the first and remains the only forum addressing State government's significant role in brain injury. NASHIA is the premier source of information and education for State agency employees who are responsible for public brain injury policies, programs, and services. NASHIA is also the voice of State government in Federal TBI policy issues.

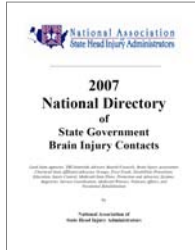
Published Booklets



Guide to State Government Brain Injury Policies, Funding and Services

Assists State agency administrators in identifying trends in service development and funding mechanisms.

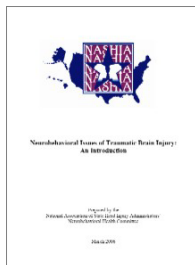
Date: 2005 Authors:
Length: 294 pages Anne King, BA, and
Price: \$150.00 Susan L. Vaughn, MEd



National Directory of State Government Brain Injury Contacts (NEW)

Includes contact information for State government staff and others involved in TBI service delivery—from prevention to community reintegration and support.

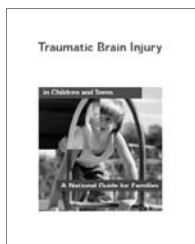
Date: 2007 Authors:
Length: 212 pages NASHIA Members and Non-
Price: \$50.00 member State Lead Agencies



Neurobehavioral Issues of TBI: An Introduction

Provides State agency administrators and providers with an introduction to TBI-related neurobehavioral health issues.

Date: 2006 Authors:
Length: 79 pages Neurobehavioral Health Committee; guest authors:
Price: \$20.00 John D. Corrigan, Randall W. Evans, Colin D. Hall,
Gary L. Lamb-Hart, and Thomas McAllister; and State
Lead Agency contacts from AK, MA, MN, NH, and NY

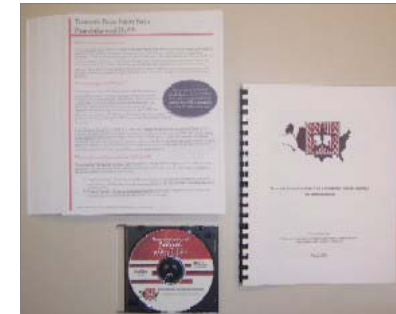


TBI in Children and Teens: A National Guide for Families

A guide to help families understand their children's injury and treatment, locate services, and pay short- and long-term bills.

Date: 1999 Authors:
Length: 208 pages Janet Houston, MHA, Laurie
Price: \$12.00 Warnock, and Lash and
Associates

SPECIAL BUNDLE



Date: 2006
Length: 1 booklet, 1 radiocast, 1 fact sheet set
Price: \$100.00

Neurobehavioral Issues & TBI Bundle

For your convenience we've assembled this training resource bundle to include one copy each of the:

- *Neurobehavioral Issues of Traumatic Brain Injury: An Introduction* booklet,
- 3-part *Neurobehavioral Radiocast Series* on CD-ROM, and
- *Traumatic Brain Injury Facts: Neurobehavioral Health* fact sheet set (which includes 100 fact sheets).

This price equates to more than a 15% discount when buying these items individually.

Photocopies



Building Capacity of Educators to Serve Students with TBI: A Regional Team Approach

Describes a multi-dimensional statewide approach to training educators to provide quality educational services to students with TBI. It is an expedient and cost-effective model that accesses the services of a highly trained cadre of interdisciplinary professionals to provide technical assistance, maintain quality of services, and promote collaboration throughout a State's educational system.

Date: 2004 Author: Ann Glang, PhD
Length: 17 pages
Price: \$5.00

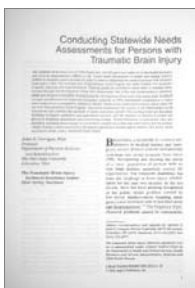


Native Americans with TBI and the First Native American Summit on TBI

Summarizes the stories and recommendations of the summit participants.

Date: 2004 Author: Margaret P. Moss, DSN, RN
Length: 70 pages
Price: \$10.00

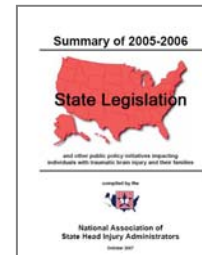
Reprint



Conducting Statewide Needs Assessments for Persons with TBI

Contrasts the methods of needs assessments utilized by 11 states within the Federal TBI Program.

Date: 1999 Author: John D. Corrigan, PhD
Length: 20 pages
Price: \$5.00



Summary of 2005-2006 State Legislation (NEW)

This report is a summary of State legislation pertaining to traumatic brain injury that was signed into law or vetoed during this period. The report also contains sample legislation.

Date: 2007 Author: Susan L. Vaughn, MEd
Length: 119 pages
Price: \$25.00

Fact Sheets



TBI Facts: Children and Youth

Provides the medical and IDEA definitions for TBI and describes the various causes and consequences of TBI for children and youth.

Date: 2001 Author: Ad Hoc NASHIA Committee
Length: Packet of 100
Price: \$25.00



TBI Facts: Neurobehavioral Health

Describes cognitive, physical, and perceptual examples of how TBI may change how a person interacts and responds behaviorally.

Date: 2005 Author: Neurobehavioral Health Committee
Length: Packet of 100
Price: \$25.00



TBI Facts: TBI and Older Adults

Discusses TBI in older adults, including the kinds of problems involved, courses of treatment, compensatory strategies, prevention measures, and services.

Date: 2005 Author: Ad Hoc NASHIA Committee
Length: Packet of 100
Price: \$25.00

CD-ROMs

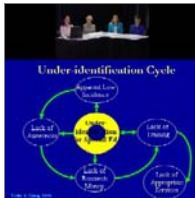


3-part Neurobehavioral Radiocast Series

Discusses the causes, consequences, assessment and treatment approaches, and community and State systems responses to neurobehavioral issues following TBI.

Date: 2005
Length: 1 CD/360 mins
Price: \$75.00

Presenters:
Francesca A. LaVecchia, PhD,
Thomas W. McAllister, MD, and
Sharyl Helgeson, RN



Building Statewide Capacity to Serve Students with TBI Web Cast & Document

Raises decision makers' awareness of the need for specialized TBI training for educators, and to present promising training models.

Date: 2005
Length: 1 CD/90 mins and
17-page pub
Price: \$35.00

Panelists:
Roberta DePompei, PhD, Ann
Giang, PhD, and Janet Tyler,
PhD

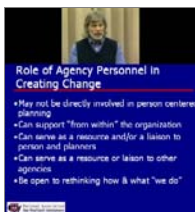


TBI and Domestic Violence Web Cast

Discusses safety planning, screening methods, coping strategies, intervention techniques, resources, services, and supports.

Date: 2004
Length: 1 CD/120 mins
Price: \$25.00

Panelists:
Sue Parry, PhD, and
Susan L. Vaughn, MEd



TBI and Housing Web Cast

Discusses the housing system; crucial qualities of services; strategies to access services; aspects of planning for needs; and creative ways to obtain appropriate assistance.

Date: 2003
Length: 1 CD/180 mins
Price: \$25.00

Panelists:
Michael McCarthy, MA, and
Susan L. Vaughn, MEd

CD-ROMs



TBI and Substance Abuse Web Cast

Discusses service provision, collaborative care, residential treatment programs, and a community-based model.

Date: 2003
Length: 1 CD/120 mins
Price: \$25.00

Panelists:
John D. Corrigan, PhD, Frank
Sparadeo, PhD, and Robert
Ferris, LSW



TBI Trust Funds Web Cast

Discusses the challenges of planning, starting, and managing a trust fund that benefits individuals with brain injury.

Date: 2005
Length: 1 CD/120 mins
Price: \$25.00

Panelists:
William A.B. Ditto, MSW, Kristen
Vincent, MTS, and Robert
Walker, MSW, LCSW



Using a Team Approach to Employment of People with TBI Web Cast

Discusses the impact of TBI on an individual's ability to get and keep a job, and how a team approach to employment services is used.

Date: 2005
Length: 1 CD/120 mins
Price: \$25.00

Panelists:
Dave Hebda, PhD, Kimberly Graves,
Sheli Sotiropoulos, Caroline Price,
Susan Rudolph, and Shane Wise

Novelty Items (NEW)

NASHIA T-shirt



Price: \$20.00

NASHIA Tote Bag



Price: \$10.00